



**Warm Air & Radiant Heater**

**Evaporative Air Cooler**



Heating

## Heater

Gas GH 0640 / GH 0641 - GH 0625 - GH 0660



4



5



6

Gas **NEW** GH 0618



7

Kerosene / Gas oil DH 0510 - KH 0320



8



9

Electrical **NEW** EH 0150 - EH 0045



10



11

Gas Infrared ( High Intensity) **NEW** GR 0100 - GR 0200



12

## Air Furnace

Gas GF 0760 - GF 1560 - GF 3060



13



14



15

Gas oil OF 0700 - OF 1500 - OF 3000



13



14



15

## Space Heater

Gas GW 0461 - GW 0260 - GW 0460



16



17

Kerosene / Gas oil GW 0461 - GW 0260 - GW 0460



18



19

NG (Natural Gas) Heating Value 9300 kcal/m<sup>3</sup> - Gas oil Heating Value 9000 kcal/ /lit - Kerosene Heating Value 8800 kcal/ /lit



*Cooling*

## Industrial Evaporative Cooler

---

EC 1100



20

EC 1800 - EC 2500



21

## Evaporative Cooler

---

EC 0600 / EC 0750

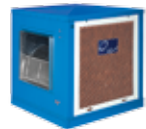


22

EC 0350 / EC 0550 / EC 0700



23



24

VC 0380 / VC 0550 / VC 0600



25

VC 1100

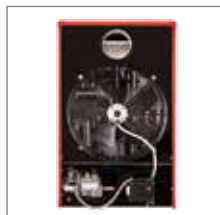


26

GM 0680



27



Back View



Axial Fan



Thermostat

**Advantages**

- CE Certified, #1312BT5186
- Thermal efficiency more 83%
- Thermostatic control and lower fuel consumption
- Low noise with high efficiency axial fan (ebm papst-GERMANY)
- High safety , equipped with fan control thermostat, limit control and gas control valve (SIT Group-ITALY)
- Ability to install on base and wall
- Natural gas (can be converted to LPG)
- The two-stage gas valve and axial fan is factory installed on the unit heater model 641, main gas (100% and 50% fire)

**Applications:** industrial, store, workshop, restaurant, bank, sport club, mosque

Specifications	GH 0640/ GH 0641
Fuel Type	Natural Gas - LPG / Natural Gas
Heat Input <i>kcal/h</i>	45000-38000 / 25000-45000
Fuel Consumption <i>per hour</i>	4.8 m <sup>3</sup> - 3.7 kg / 2.7 m <sup>3</sup> - 4.8 m <sup>3</sup>
Heating Space <i>(Approx.)m<sup>3</sup></i>	700-900 / 400-900
Electrical	1ph - 220v - 1A
Dimensions <i>cm</i> <i>Height, Length, Width</i>	105 x 72 x 60
Weight (gross) <i>Kg</i>	87
Flue Diameter <i>cm</i>	15



### Advantages

- CE Certified, #1312BT5186
- Thermal efficiency more 83%
- Thermostatic control and lower fuel consumption
- Low noise with high efficiency axial fan
- High safety , equipped with fan control thermostat, limit control and gas control valve (SIT Group-ITALY)
- Ability to install on base and wall
- Natural gas (can be converted to LPG)

**Applications:** industrial, store, workshop, restaurant, bank, sport club, mosque



Side View



Back View



Thermostat

Specifications	GH 0625
Fuel Type	Natural Gas - LPG (optional)
Heat Input <i>kcal/h</i>	25000-22500
Fuel Consumption <i>per hour</i>	2.7 m <sup>3</sup> - 2 kg
Heating Space <i>(Approx.)m<sup>3</sup></i>	400-700
Electrical	1ph - 220V - 1A
Dimensions <i>cm</i> <i>Height, Length, Width</i>	83.5 x 60 x 41
Weight (gross) <i>Kg</i>	65
Flue Diameter <i>cm</i>	10



Side View



Back View



Front View



### Advantages

- Thermal efficiency more 83%
- High safety, equipped with fan control thermostat, limit control and two stage gas control valve (SIT Group-ITALY)
- Low noise with high efficiency centrifugal fan
- Air quality control and energy saving with return and fresh air

**Applications:** residential, commercial and educational buildings, restaurant, banksport club, mosque

Specifications	GH 0660
Fuel Type	Natural Gas
Heat Input (min-max) kcal/h	25000-45000
Fuel Consumption cubic meter per hour	2.7 - 4.8
Heating Space (Approx.)m <sup>3</sup>	400 - 900
Electrical	1ph - 220V - 3.5A
Dimensions cm Height, Length, Width	125 x 134 x 77
Weight (gross) Kg	132



### Advantages

- Thermal efficiency more 81%
- Thermostatic control and lower fuel consumption
- Low noise with high efficiency axial fan
- High safety , equipped with fan control thermostat, limit control and gas control valve (SIT Group-ITALY)
- Ability to install on base and wall
- Natural gas (can be converted to LPG)

**Applications:** residential, commercial and educational buildings, restaurant, bank, mosque



Side View



Back View



Fan

Specifications	GH 0618
Fuel Type	Natural gas
Heat Input <i>kcal /h</i>	18000
Fuel Consumption <i>cubic meter per hour</i>	1.9
Heating Space <i>(Approx.)m<sup>3</sup></i>	250 - 400
Electrical	1ph - 220v - 1A
Dimensions <i>cm</i> <i>Height, Length, Width</i>	51.5 x 76.5 x 60.5
Weight (gross) <i>Kg</i>	45
Flue diameter <i>cm</i>	10



Side View



Back View



Inside View



### Advantages

- Air heater with proper circulation of hot air
- Thermal efficiency more 70%
- Equipped with solenoid valve
- Low noise with high efficiency centrifugal fan

**Applications:** commercial buildings, restaurant, bank, sport club, mosque, workshop

Specifications	DH 0510
Fuel Type	Gas oil - Kerosene
Heat Input (max) kcal /h	50000
Fuel Consumption Litre per hour	1.6 - 5.6 Gas oil / 1.3 - 5.7 Kerosene
Heating Space (Approx.)m <sup>3</sup>	600 - 900
Electrical	1ph - 220V - 3A
Dimensions cm Height, Length, Width	200 x 83 x 74
Weight (gross) Kg	132
Flue Diameter cm	15
Tank Volume Lit	28





### Advantages

- Air heater with proper circulation of hot air
- Thermal efficiency more 70%
- Equipped with solenoid valve
- Low noise with high efficiency centrifugal fan

**Applications:** residential commercial buildings, restaurant, bank, sport club, mosque, workshop



Side View



Back View



Carburetor

Specifications	KH 0320
Fuel Type	Kerosene
Heat Input (max) kcal/h	32000
Fuel Consumption Litre per hour	0.9 - 3.6
Heating Space (Approx.)m <sup>3</sup>	450 - 600
Electrical	1ph - 220V - 3A
Dimensions cm Height, Length, Width	143 x 77 x 61
Weight (gross) Kg	112
Flue Diameter cm	15
Tank Volume Lit	28



Control Panel



Side View



Back View



Advantages

- Heating output 5,10,15kW
- Compact size and portable
- Automatic temperature control
- Low noise with high efficiency axial fan
- Rust-resistant body with epoxy insulation
- Ability to install on the wall and ground

Applications: workshop, store, kiosk, villa, parking, drying system

Specifications	EH 0150
Output Steps <i>kW</i>	5 - 10 - 15
Air Flow <i>cfm (m³/ h)</i>	765 (1300)
Electrical	3ph - 380V - 21.7A
Heating Space <i>(Approx.)m³</i>	240
Dimensions <i>cm</i> <i>Height, Length, Width</i>	35 x 42 x 53
Weight (gross) <i>Kg</i>	20



Side View



Back View



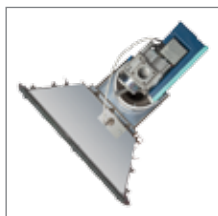
Control Panel

**Advantages**

- Heating output 1.5,3,4.5kW
- Compact size and portable
- Automatic temperature control
- Low noise with high efficiency axial fan
- Rust-resistant body with epoxy insulation
- Ability to install on the wall and ground

**Applications:** workshop, store, kiosk, villa, parking, drying system

Specifications	EH 0045
Output Steps <i>kW</i>	1.5 - 3 - 4.5
Air Flow <i>cfm (m³/ hr)</i>	295(500)
Electrical	1ph - 220V - 20.5A
Heating Space <i>(Approx.)m³</i>	70
Dimensions <i>cm</i> <i>Height, Length, Width</i>	32 x 32 x 56
Weight (gross) <i>Kg</i>	13



Side View



Front View



Details

**Advantages**

- Gas fired radiant heater
- High response thermal speed (lower 30 sec)
- Local heating
- Low installation costs
- Thermal efficiency more 98%
- High safety, equipped with gas control valve (SIT Group-ITALY)
- Can be connected to room thermostat

**Applications:** manufacturing, repairshop, drying system, store, loading hall

Specifications	GR 0100 - GR 0200
Fuel Type	Natural Gas
Heat Input <i>kcal / h</i>	25000 - 50000
Fuel Consumption <i>cubic meter per hour</i>	2.7 / 5.3
Heating Area Max. <i>(Horizontal)m<sup>2</sup></i>	110 - 150
Electrical	1ph - 220V - 0.5A
Dimensions <i>cm</i> <i>Height, Length, Width</i>	22 x 164 x 34 / 22 x 168 x 54
Weight (gross) <i>Kg</i>	15 / 27



### Advantages

- Thermal efficiency more 80%
- Stainless steel combustion chamber
- Thermostatic control and lower fuel consumption
- Limit control to avoid increasing the high limit temperature of the heat exchanger
- High safety, equipped with fan limit control system
- Low noise with high efficiency centrifugal fan
- Hot air flow with duct length of 10m
- Ability to install on outside space

**Applications:** residential, commercial and educational buildings, restaurant, greenhouse



Side View



Back View



Burner

Specifications	OF 0700 - GF 0760
Fuel Type	Gas oil / Natural Gas
Heat Input <i>kcal /h</i>	50000
Fuel Consumption <i>per hour</i>	5.6 Lit / 5.3 m <sup>3</sup>
Heating Space <i>(Approx.)m<sup>3</sup></i>	600 - 1000
Electrical	1ph - 220V - 3A
Dimensions <i>cm</i> <i>Height, Length, Width</i>	200 x 73 x 70
Weight (gross) <i>Kg</i>	132
Flue Diameter <i>cm</i>	15



Side View



Back View



Burner



### Advantages

- Thermal efficiency more 80%
- Stainless steel combustion chamber
- Thermostatic control and lower fuel consumption
- Limit control to avoid increasing the temperature of the heat exchanger
- Low noise with high efficiency centrifugal fan
- Hot air flow with duct length of 20m
- Available vertically or horizontally position

**Applications:** commercial and educational buildings, restaurant, greenhouse

Specifications	OF 1500 - GF 1560
Fuel Type	Gas oil - Natural Gas
Heat Input <i>kcal /h</i>	150000
Fuel Consumption <i>per hour</i>	16.7 Lit - 16 m <sup>3</sup>
Heating Space <i>(Approx.)m<sup>3</sup></i>	2500 - 4000
Electrical	3ph - 380V - 5A
Dimensions <i>cm</i> <i>Height, Length, Width</i>	266 x 143 x 107
Weight (gross) <i>Kg</i>	510
Flue Diameter <i>cm</i>	20



**Advantages**

- Thermal efficiency more 80%
- Stainless steel combustion chamber
- Thermostatic control and lower fuel consumption
- Limit control to avoid increasing the temperature of the heat exchanger
- Low noise with high efficiency centrifugal fan
- Hot air flow with duct length of 30m
- Available vertically or horizontally position

**Applications:** commercial and educational buildings, restaurant, greenhouse



Side View



Back View



Burner

Specifications	OF 3000 - GF 3060
Fuel Type	Gas oil - Natural Gas
Heat Input <i>kcal /h</i>	300000
Fuel Consumption <i>per hour</i>	33.3 Lit - 32 m <sup>3</sup>
Heating Space <i>(Approx.)m<sup>3</sup></i>	5500 - 8500
Electrical	3ph - 380V - 10A
Dimensions <i>cm</i> <i>Height, Length, Width</i>	311 x 225 x 136
Weight (gross) <i>Kg</i>	1010
Flue Diameter <i>cm</i>	30



Side View



Back View



Side view



**Advantages**

- Spot heating
- Suitable for space with adequate(Appropriate) ventilation
- No need to electricity

**Applications:** workshop, factory, drying system

Specifications	GW 0461
Fuel Type	Natural Gas
Heat Input <i>kcal /h</i>	50000
Fuel Consumption <i>per hour</i>	5.3 m <sup>3</sup>
Heating Space <i>(Approx.)m<sup>3</sup></i>	500 - 950
Dimensions <i>cm</i> <i>Height, Length, Width</i>	160 x 94 x 73
Weight (gross) <i>Kg</i>	52





### Advantages

- Spot heating
- Suitable for space with adequate(Appropriate) ventilation
- No need to electricity

**Applications:** workshop, factory, drying system



Side View



Details



gas valve

Specifications	GW 0260 - GW 0460
Fuel Type	Natural Gas
Heat Input <i>kcal /h</i>	30000 / 50000
Fuel Consumption <i>per hour</i>	3.2 m <sup>3</sup> / 5.3 m <sup>3</sup>
Heating Space <i>(Approx.)m<sup>3</sup></i>	350 - 550 / 500 - 950
Dimensions <i>cm</i> <i>Height, Length, Width</i>	125 x 75 x 59 / 155 x 72 x 76
Weight (gross) <i>Kg</i>	35 / 58



Side View



Back View

Blower, Solenoid Valve  
and Carburetor**Advantages**

- Spot heating
- Suitable for space with appropriate ventilation
- Equipped with solenoid valve and carburetor
- Lower fuel consumption with adjust carburetor

**Applications:** workshop, factory, drying system

Specifications	DW 0440
Fuel Type	Gas oil / Kerosene
Heat Input <i>kcal / h</i>	50000
Fuel Consumption <i>Litre per hour</i>	1.6 - 5.6 Gas oil / 1.3 - 5.7 Kerosene
Heating Space <i>(Approx.)m<sup>3</sup></i>	500 - 950
Electrical	1ph - 220V - 1A
Dimensions <i>cm</i> <i>Height, Length, Width</i>	173 x 94 x 73
Weight (gross) <i>Kg</i>	70
Tank Volume <i>Lit</i>	28



### Advantages

- Spot heating
- Suitable for space with appropriate ventilation
- Equipped with solenoid valve and carburetor
- Lower fuel consumption with adjust carburetor

**Applications:** workshop, factory, drying system



Side View



Back View



Blower, Solenoid Valve  
and Carburetor

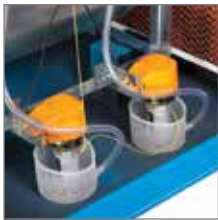
Specifications	DW 0250 - DW 0450
Fuel Type	Gas oil / Kerosene
Heat Input (max) kcal /h	32000 / 52000
Fuel Consumption Litre per hour	Kerosene 0.9 - 3.6 / Kerosene 1.3 - 5.7 Gas Oil 1.5 - 3 / Gas Oil 1.6 - 5.6
Heating Space (Approx.)m <sup>3</sup>	350 - 550 / 500 - 950
Electrical	1ph - 220v - 1A
Dimensions cm Height, Length, Width	125 x 83 x 59 / 155 x 103 x 75
Weight (gross) Kg	53 / 85
Tank Volume Lit	28



Inside View



Motor



Water Pump



Advantages

- Cooling efficiency more 83%
- Quiet Operation
- 30% cooler than normal evaporative cooler with aspen pad during the season
- The long life and rigid evaporative cooling media
- Reduce the transfer of harmful bacteria
- 100% fresh, cool and clean air
- Cold air flow with duct length of 20m
- Steady seasonal cooling efficiency
- Easier and cheaper to install
- Ability to change the fan speed and single-phase power to three-phase with inverter (specially for EC 1100 & EC 1800)

**Applications:** residential, commercial and educational buildings, restaurant, bank, mosque

Specifications	EC 1100
Cooling System	Evaporative
Electrical	3ph - 380V - 3A / 1ph - 220V - 6.4A
Air Flow <i>cfm (m<sup>3</sup>/ h)</i>	6500 (11000)
Dimensions <i>cm</i> <i>Height, Length, Width</i>	121 x 106 x 106
Motor <i>hp</i>	2
Weight +Water Weight <i>Kg</i>	135 + 70



**Advantages**

- Cooling efficiency more 83%
- Quiet Operation
- 30% cooler than normal evaporative cooler with aspen pad during the season
- The long life and rigid evaporative cooling media
- Reduce the transfer of harmful bacteria
- 100% fresh, cool and clean air
- Cold air flow with duct length of 30m
- Steady seasonal cooling efficiency
- Easier and cheaper to install
- Ability to change the fan speed and single-phase power to three-phase with inverter (specially for EC 1100 & EC 1800)

**Applications:** commercial and educational buildings, restaurant, bank, mosque



Inside View



Motor

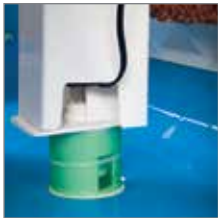


Water Pump

Specifications	EC 1800 - EC 2500
Cooling System	Evaporative
Electrical	3ph - 380V - 8.5A / 3ph - 380V - 10A
Air Flow <i>cfm (m<sup>3</sup>/h)</i>	10600 (18000) / 14700 (25000)
Dimensions <i>cm</i> <i>Height, Length, Width</i>	168 x 150 x 150 / 177 x 177 x 188
Motor <i>hp</i>	5.5 / 7.5
Weight +Water Weight <i>Kg</i>	265 + 130 / 400 + 320



Inside View



Drain Valve



Remote Control and  
Thermostat



### Advantages

- Cooling efficiency more 83%
- Quiet Operation
- 30% cooler than normal evaporative cooler with aspen pad during the season
- The long life and rigid evaporative cooling media
- Reduce the transfer of harmful bacteria
- Air Filter
- 100% fresh, cool and clean air
- Timer and thermostatic controller
- Equipped with electronic board, remote control, environmental thermostat and drain valve
- Steady seasonal cooling efficiency
- Easier and cheaper to install

**Applications:** residential, commercial and educational buildings, restaurant, bank, mosque

Specifications	EC 0600 - EC 0750
Cooling System	Evaporative
Electrical	1ph - 220V - 3.4A / 1ph - 220V - 5A
Air Flow <i>cfm (m<sup>3</sup>/h)</i>	3800 (6460) / 4700 (7990)
Dimensions <i>cm</i> <i>Height, Length, Width</i>	99 x 90 x 90 / 111 x 90 x 90
Motor <i>hp</i>	$\frac{1}{2}$ / $\frac{3}{4}$
Weight +Water Weight <i>Kg</i>	60 + 50 / 68 + 50



### Advantages

- Cooling efficiency more 83%
- Quiet Operation
- 30% cooler than normal evaporative cooler with aspen pad during the season
- Thermostatic controller and safety control RCCB (Residual-Current Circuit Breaker)
- The long life and rigid evaporative cooling media
- Reduce the transfer of harmful bacteria
- Steady seasonal cooling efficiency
- Easier and cheaper to install

**Applications:** residential, commercial and educational buildings, restaurant, bank, mosque



Side View



Motor

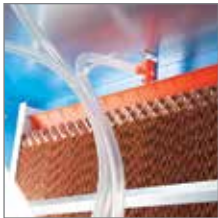


Thermostat

Specifications	EC 0350
Cooling System	Evaporative
Electrical	1ph-220V-3A
Air Flow <i>cfm (m<sup>3</sup>/h)</i>	2600 (4420)
Dimensions <i>cm</i> <i>Height, Length, Width</i>	80 x 75 x 75
Motor <i>hp</i>	$\frac{1}{3}$
Weight + Water Weight <i>Kg</i>	50 + 35



Inside View



Cellulose Pad



Thermostat



**Advantages**

- Cooling efficiency more 83%
- Quiet Operation
- 30% cooler than normal evaporative cooler with aspen pad during the season
- Thermostatic controller and safety control RCCB (Residual-Current Circuit Breaker)
- The long life and rigid evaporative cooling media
- Reduce the transfer of harmful bacteria
- Steady seasonal cooling efficiency
- Easier and cheaper to install

**Applications:** residential, commercial and educational buildings, restaurant, bank, mosque

Specifications	EC 0550 - EC 0700
Cooling System	Evaporative
Electrical	1ph-220V-3.6A / 1ph-220V-5.8A
Air Flow <i>cfm (m<sup>3</sup>/h)</i>	3800 (6460) / 4700 (7990)
Dimensions <i>cm</i> <i>Height, Length, Width</i>	99 x 90 x 90 / 111 x 90 x 90
Motor <i>hp</i>	$\frac{1}{2}$ / $\frac{3}{4}$
Weight +Water Weight <i>Kg</i>	74 + 50 / 86 + 50





### Advantages

- Cooling efficiency more 83%
- Quiet Operation
- 30% cooler than normal evaporative cooler with aspen pad during the season
- Thermostatic controller and safety control RCCB (Residual-Current Circuit Breaker)
- The long life and rigid evaporative cooling media
- Reduce the transfer of harmful bacteria
- Steady seasonal cooling efficiency
- Easier and cheaper to install

**Applications:** residential, commercial and educational buildings, restaurant, bank, mosque



Side View



Inside View

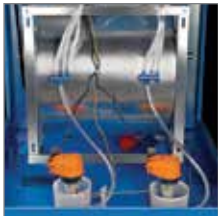


Thermostat

Specifications	VC 0380-VC 0550-VC 0600
Cooling System	Evaporative
Electrical	1ph-220V-2.5A/1ph-220V-3.8A/1ph-220V-5.3A
Air Flow <i>cfm (m³/h)</i>	2600 (4420) / 3800 (6460) / 4200 (7140)
Dimensions <i>cm</i> <i>Height, Length, Width</i>	80 x 75 x 75 / 99 x 90 x 90 / 99 x 90 x 90
Motor <i>hp</i>	$\frac{1}{3} / \frac{1}{2} / \frac{3}{4}$
Weight + Water Weight <i>Kg</i>	52 + 35 / 75 + 50 / 86 + 50



Side View



Inside View



Motor



**Advantages**

- Cooling efficiency more 83%
- Quiet Operation
- 30% cooler than normal evaporative cooler with aspen pad
- Thermostatic controller and safety control RCCB (Residual-Current Circuit Breaker)
- The long life and rigid evaporative cooling media
- Reduce the transfer of harmful bacteria
- Steady seasonal cooling efficiency
- Ability to change the fan speed and single-phase power to three-phase with inverter
- Easier and cheaper to install

**Applications:** residential, commercial and educational buildings, restaurant, bank, mosque

Specifications	VC 1100
Cooling System	Evaporative
Electrical	3ph - 380V - 3A
Air Flow <i>cfm (m<sup>3</sup>/h)</i>	6500 (11000)
Dimensions <i>cm</i> <i>Height, Length, Width</i>	121 x 106 x 106
Motor <i>hp</i>	2
Weight + Water Weight <i>Kg</i>	135 + 70



### Advantages

- Cooling efficiency more 83%
- Quiet Operation
- 30% cooler than normal evaporative cooler with aspen pad
- Thermostatic controller and safety control RCCB (Residual-Current Circuit Breaker)
- The long life and rigid evaporative cooling media
- High safety, equipped with fan control thermostat, limit control and two stage gas control valve (SIT Group-ITALY)
- Low noise with high efficiency centrifugal fan
- Air quality control and energy saving with return and fresh air
- High thermal efficiency more 83%

**Applications:** residential, commercial and educational buildings, restaurant, bank, mosque



Side View



Inside View

Specifications	GM 0680
Fuel Type	Natural Gas
Heat Input (min-max) Kcal/h	25000 - 45000
Fuel Consumption per hour	2.7 m <sup>3</sup> / 4.8 m <sup>3</sup>
Heating Space (Approx.)m <sup>3</sup>	450 - 900
Electrical	1ph - 220V - 6A
Air Flow cfm (m <sup>3</sup> /h)	4000 (6800)
Motor hp	$\frac{3}{4}$
Cooling System	Evaporative
Dimensions cm	142 x 152 x 90
Height, Length, Width	
Weight + Water Weight Kg	187 + 50



This image shows a full page of blank, lined paper. It features approximately 20 evenly spaced horizontal grey lines across its entire width, providing a template for writing or drawing. The margins are consistent on all sides.



